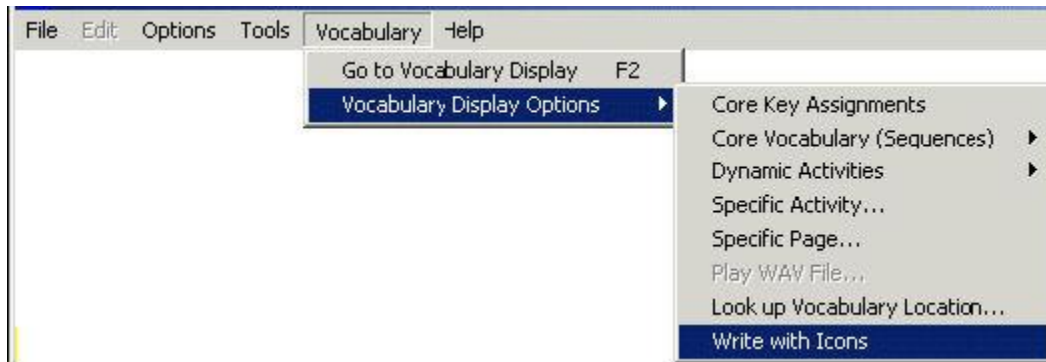


How do I Use the Write with Icons Program?

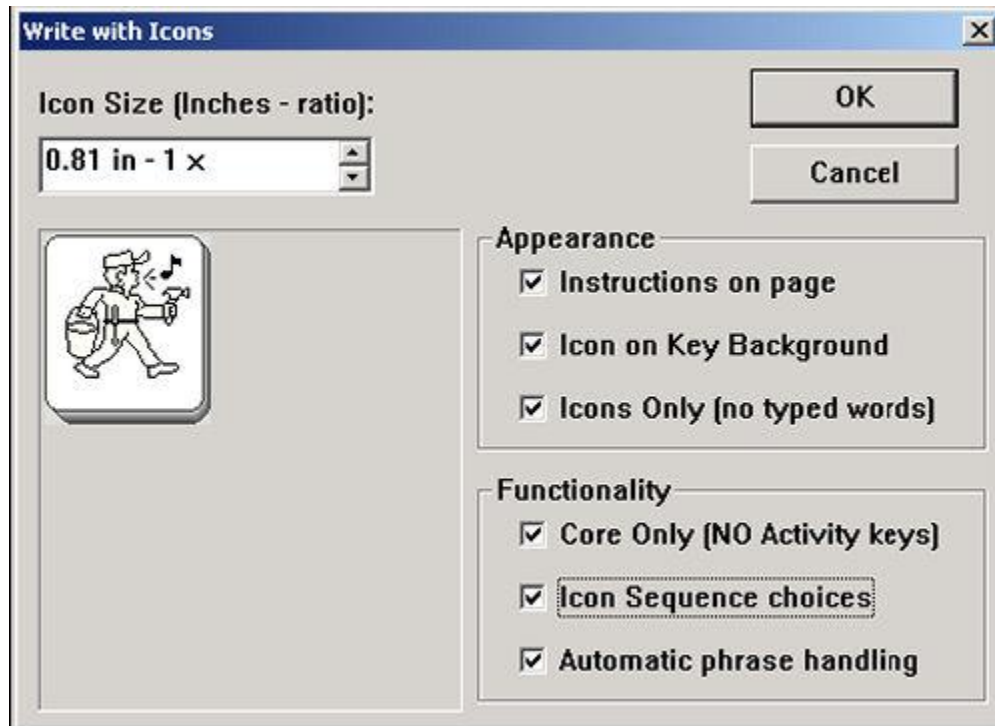


The **Write with Icons** option allows you to type text, word by word, and see it displayed as icons. Words that are in the Core Vocabulary and Dynamic Activities of the current User Area in your emulator will be displayed. You must type the word then **add a space, tab, return or punctuation after it**. If you type a word and nothing happens, either you forgot to add a space, etc., at the end of the word, or that word is not available in the current vocabulary.

For example:

Select the Write with Icons option.

You see the Options Box.



You may set the options however you want to.

Appearance Options:

Instructions on Page: When this is checked, you will see instructions on the screen for using Write With Icons. If it is unchecked, the instructions will not be visible. (This is also a setting in File: Preferences.)

Icon on Key Background: If this is selected you see the icons as they appear on keys:



Note: If you select this option, you may find that it causes some visual confusion. It also consumes a lot of ink if you are printing the screen.

Icons Only (no typed words): If this is selected, when you type words, only those words that are not contained in sequences will be visible on your screen.

Note: Unless you know your vocabulary extremely well, you might want to leave this box unchecked until you get used to Write with Icons.

Functionality Options

Core Only (NO Activity keys): If this is checked you will see only Core Vocabulary icons or sequences. Any Activities where the word is used will not be shown.

Icon Sequence Choices: If this is selected, when you type a word, a box will pop up containing all the sequences where the word you typed is used. (This is also a setting in File: Preferences.)

Automatic Phrase Handling: When this is checked, Write with Icons automatically figures out if a group of words is stored under a sequence and then produces that sequence for you. If this is unchecked, Write with Icons produces sequences for each separate word you type. When this is On, end each phrase with a punctuation mark so PASS knows you have ended the phrase.

Note: If Automatic Phrase Handling is Off, you can force Write With Icons to produce a whole phrase by using the F6, F7, and the SPACE keys.

Select OK when you have finished choosing your options. You are ready to Write with Icons.

An Example of Write with Icons

You see a blank Write with Icons page.

We are using the 45-2-hit vocabulary.

Type the word, "I" and add a space.

You see a box with all the possible "I" sequences. The most likely sequence is highlighted at the top of the box. Select the sequence you want to use.



Type the word "want" and add a space.



You see the sequences under which I, and WANT are stored. Since these are Core vocabulary words, they are often used in Dynamic Activities as "building block" words. In this example you saw message boxes that gave you various choices that are available in the Activity Row after the sequence is selected. You can add an ending or select No Activity Key to stay with just the Core words.

Since Automatic Phrase Handling is ON, if individual words are stored as phrases, PASS will display the phrases.

Now type "to" and add a space. Select the sequence you want.

Type "eat". Select the sequence you want. Now you know how "I want to eat" is stored.

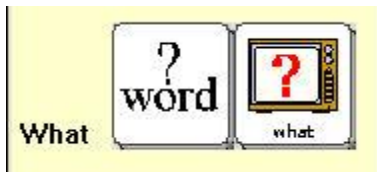
Finding Phrases using the F6 and F7 Keys

You can also find sequences for phrases by using the F6 and F7 keys on your keyboard. You can use F6 and F7 whether Automatic Phrase Handling is On or Off.

Below is an example of using F6 and F7 to force phrase groupings when Automatic Phrase Handling is ON.

Our example sentence is "What do you do?"

Type the word "What" and see:



Now type "do" and see this:



Type "you".



Type "do", and ---you see:



Your earlier sequences have disappeared! PASS is telling you that the whole "What do you do?" sentence is stored on a Page, which is nice but not what you want to teach. You want to teach the basic sequences.

Now you use F6 and F7 (even though Automatic Phrase Handling is turned ON) to force PASS to give you the basic sequences.

Type What, space, F6do space youF7, space do space or punctuation mark.



Note: You can also use F6 and F7 with a single word. This will prevent the word from becoming part of a phrase or group of words.

Use Punctuation to End Phrases and/or Sentences

With Automatic Phrase-Handling, punctuation at the end of a phrase or sentence tells PASS when you have finished with one phrase and are moving on to another one.

For example, if you type "What, space, F6do youF7, space do", with no ending punctuation and then start another sentence that begins with, "You", PASS is likely to think that the last word of the previous sentence and the first word of the new sentence make up a phrase that is stored under a sequence.

This is what you would see which is probably not what you want.



To prevent two distinct sentences or phrases from “running together”, type a punctuation character (in this case a ?) at the end of phrases or sentences so PASS knows they are finished.



Change your Options without Losing your Work

If you are in Write with Icons and would like to see your icons displayed differently, without losing the work you have already done, open the Vocabulary Display Menu or press F11 on your keyboard.

Select Write with Icons.

The Options box pops up.

Change to the options you want to use.

Select OK.

A message asks if you want to save your work.

Select Cancel.

You are returned to Write with Icons and your work is still there.

Now you can type words and the new settings will be used.

Plurals

If the vocabulary has the PLURAL tool stored under a core sequence, Write with Icons can generate the plural of a word and display the whole sequence.

For example:

Type "calf".

Press the F8 key.

Type a space (or punctuation or <RETURN>).